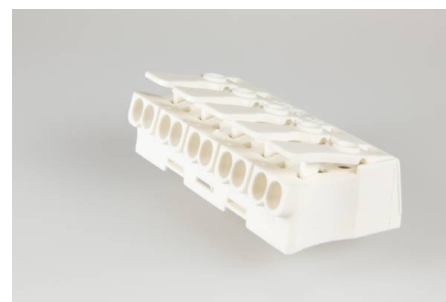




Screwless Connectors  
Luminaire Connectors  
**LK 980-01 RZ/ 5**



### Order Info

reference number (ref. no.)	21911
PU	500
EAN	4028012113064

### Type

Type	Terminal Block
connection type	push-in
number of poles	5 pole
colour	white

### Electrical Data

rated voltage	450 V
rated current	24 A

### Connection Data

cross-section rating	2.5 mm <sup>2</sup>
cross-section rating (UL)	20-14 AWG
clamping range internal	0.5 - 2.5 mm <sup>2</sup>
clamping range external	0.5 - 1.5 mm <sup>2</sup>
type of conductor internal	solid
type of conductor external	fine stranded, stranded, solid
stripping length	8.0 - 9.0 mm
fixing	short catch pin
clamping units per pole	2
wall thickness	0.5 - 1.2 mm

### Ambient Conditions

T <sub>max</sub> ambient air (at rated current)	85 °C
ammonia resistance	yes

### Materials

insulator material	PA
contact material	spring steel, copper
flammability rating acc. to UL 94	V-2

## Approvals

<b>acc. to EN 60998</b>	yes
<b>acc. to UL</b>	yes

## Accessories

<b>WKZ 980-01</b>	999041
<b>ZEL 110</b>	196420
<b>ZEL 900</b>	196423