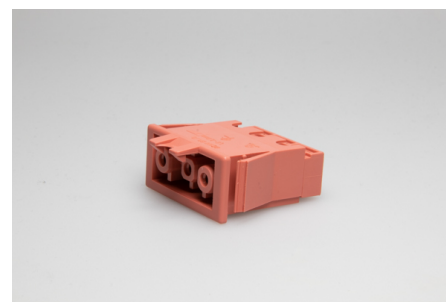




Building Installation Connector System AC 166®

G
Panel Mounting

AC 166 GEBPKV/ 3 HR



Order Info

reference number (ref. no.)	17803
PU	200
EAN	4028012155132

Type

Type	panel mount socket
connection type	push-in
number of poles	3 pole
coding	3 (mains)
colour	light red
protection against incorrect plugging	yes
PE-function	yes
latch	yes

Electrical Data

rated voltage	250 V
rated current	20 A
rated impulse voltage	4.0 kV

Connection Data

cross-section rating	2.5 mm ²
cross-section rating (UL)	14 AWG
clamping range	0.5 - 2.5 mm ²
type of conductor	solid
stripping length	8.0 - 9.0 mm
fixing	catch wing
clamping units per pole	2
pole marking	L1 ⊕ N
wall thickness	1.5 - 2.5 mm

Ambient Conditions

T _{max} ambient air (at rated current)	70 °C
T _{max} component (operation)	100 °C

IP Code acc. to EN 60529	IP20
IP Code when plugged	IP40

Materials

insulator material	PA
contact material	spring steel, brass
flammability rating acc. to UL 94	V-2

Approvals

acc. to EN 61535	yes
-------------------------	-----