

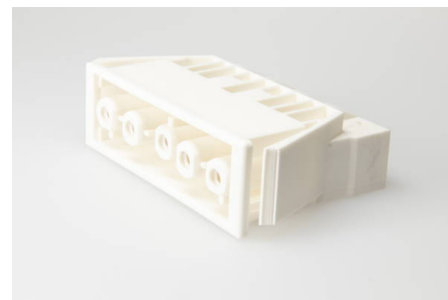


Building Installation Connector System AC 166®

G

Panel Mounting

AC 166 GEBU/ 5 WS



panel mount socket, 5 pole, white, coding: 1 (mains), wall thickness min.: 0.5 mm, wall thickness max.: 1.2 mm, voltage rating: 400 V, current rating: 20.0 A, cross-section rating: 2.5 mm², connection type: screwless

Order Info

reference number (ref. no.)	168855
PU	100
EAN	4028012102914

Type

type	panel mount socket
number of poles	5 pole
clamping units per pole	2
colour	white
coding	1 (mains)
cross-section rating	2.5 mm ²
connection type	screwless
PE function	yes
protection against incorrect plugging	yes

Technical Data

voltage rating	400 V
current rating	20.0 A
insulating material	PA 6.6
contact material	Spring Steel, Brass
core cross-section min.	0.5 mm ²
core cross-section max.	2.5 mm ²
impulse voltage rating	4.0 kV
flammability rating	V-2
max. Ambient Temperature Operation	70 °C
IP code	IP20
IP code when plugged	IP40
type of conductor solid	yes
stripping length	8.0-9.0 mm

wall thickness min.	0.5 mm
wall thickness max.	1.2 mm
upper limit temperature	100 °C
fixing	catch wing

Approvals

acc. to EN 61535	Download PDF
acc. to UL	Download PDF
acc. to CSA	Download PDF

Accessories

AC 166 VSE SW	169463
AC 166 VSE WS	169453