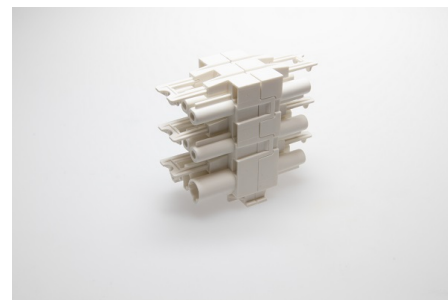




## Building Installation Connector System AC 166®

G  
Distributors

### AC 166 GVH 6/3 WS



#### Order Info

|                             |               |
|-----------------------------|---------------|
| reference number (ref. no.) | 167653        |
| PU                          | 60            |
| EAN                         | 4028012138128 |

#### Type

|                                       |                              |
|---------------------------------------|------------------------------|
| Type                                  | H shaped 1 input / 5 outputs |
| number of poles                       | 3 pole                       |
| coding                                | 1 (mains)                    |
| colour                                | white                        |
| protection against incorrect plugging | yes                          |
| PE-function                           | yes                          |
| latch                                 | yes                          |

#### Electrical Data

|                       |        |
|-----------------------|--------|
| rated voltage         | 250 V  |
| rated current         | 20 A   |
| rated impulse voltage | 4.0 kV |

#### Ambient Conditions

|   |        |
|---|--------|
| T <sub>max</sub> ambient air (at rated current) | 70 °C  |
| T <sub>max</sub> component (operation)          | 110 °C |
| T <sub>min</sub> component (operation)          | -20 °C |
| IP Code acc. to EN 60529                        | IP20   |
| IP Code when plugged                            | IP40   |

#### Materials

|                                   |       |
|-----------------------------------|-------|
| insulator material                | PA    |
| contact material                  | brass |
| flammability rating acc. to UL 94 | V-2   |

#### Approvals

|                  |     |
|------------------|-----|
| acc. to EN 61535 | yes |
| acc. to UL       | yes |

## Accessories

---

**AC 166 MA/ 3 WS**

169785

---