



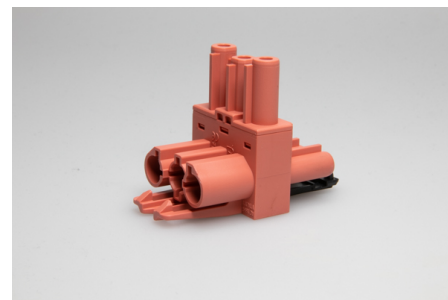
## Building Installation Connector System AC 166®

G  
Distributors

### AC 166 GVTA 3/3 HR

#### Order Info

|                             |               |
|-----------------------------|---------------|
| reference number (ref. no.) | 167273        |
| PU                          | 100           |
| EAN                         | 4028012173341 |



#### Type

|                                       |   |
|---------------------------------------|---|
| Type                                  | T-shaped 1 input / 2 outputs, stackable |
| number of poles                       | 3 pole                                  |
| coding                                | 3 (mains)                               |
| colour                                | light red                               |
| protection against incorrect plugging | yes                                     |
| PE-function                           | yes                                     |
| latch                                 | yes                                     |

#### Electrical Data

|                       |        |
|-----------------------|--------|
| rated voltage         | 250 V  |
| rated current         | 20 A   |
| rated impulse voltage | 4.0 kV |

#### Connection Data

|              |       |
|--------------|-------|
| pole marking | L ⊕ N |
|--------------|-------|

#### Ambient Conditions

|   |        |
|---|--------|
| T <sub>max</sub> ambient air (at rated current) | 70 °C  |
| T <sub>max</sub> component (operation)          | 110 °C |
| T <sub>min</sub> component (operation)          | -20 °C |
| IP Code acc. to EN 60529                        | IP20   |
| IP Code when plugged                            | IP40   |

#### Materials

|                                   |       |
|-----------------------------------|-------|
| insulator material                | PA    |
| contact material                  | brass |
| flammability rating acc. to UL 94 | V-2   |

## Approvals

|                         |     |
|-------------------------|-----|
| <b>acc. to EN 61535</b> | yes |
| <b>acc. to UL</b>       | yes |

## Accessories

|                        |        |
|------------------------|--------|
| <b>AC 166 BC/ 3 SW</b> | 169783 |
| <b>AC 166 BC/ 3 WS</b> | 169773 |