

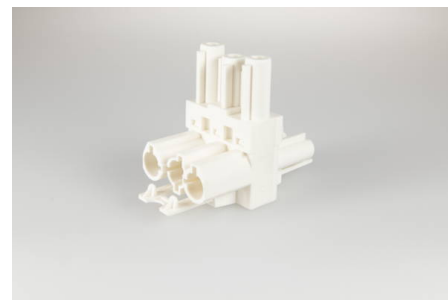


Building Installation Connector System AC 166®

G
Distributor

AC 166 GVT 3/ 3 WS

1 input/2 outputs, T shaped, 3 pole, white, coding: 1 (mains), voltage rating: 250 V, current rating: 20.0 A



Order Info

reference number (ref. no.)	167153
PU	100
EAN	4028012102860

Type

type	1 input/2 outputs, T shaped
number of poles	3 pole
colour	white
coding	1 (mains)
PE function	yes
protection against incorrect plugging	yes
latch	yes

Technical Data

voltage rating	250 V
current rating	20.0 A
insulating material	PA 6.6
contact material	brass
impulse voltage rating	4.0 kV
flammability rating	V-2
max. Ambient Temperature Operation	70 °C
IP code	IP20
IP code when plugged	IP40

Approvals

acc. to EN 61535	Download PDF
acc. to UL	Download PDF