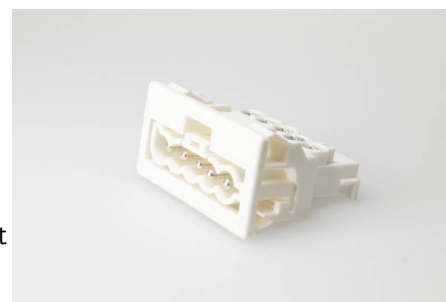




## Connectors System AC 164 Panel Mounting

### AC 164 EST/ 5 WS

plug, 5 pole, white, coding: 1 (mains), voltage rating: 240/400 V, current rating: 16 A, cross-section rating: 2.5 mm<sup>2</sup>, wall thickness min.: 0.5 mm, wall thickness max.: 1.2 mm



#### Order Info

<b>reference number (ref.no.)</b>	148755
<b>PU</b>	100
<b>EAN</b>	4028012123988

#### Type

<b>type</b>	plug
<b>number of poles</b>	5 pole
<b>clamping units per pole</b>	1
<b>colour</b>	white
<b>coding</b>	1 (mains)
<b>cross-section rating</b>	2.5 mm <sup>2</sup>
<b>PE function</b>	yes
<b>protection against incorrect plugging</b>	yes
<b>latch</b>	yes

#### Technical Data

<b>voltage rating</b>	240/400 V
<b>current rating</b>	16 A
<b>contact material</b>	brass
<b>core cross-section min.</b>	0.5 mm <sup>2</sup>
<b>core cross-section max.</b>	2.5 mm <sup>2</sup>
<b>impulse voltage rating</b>	4.0 kV
<b>flammability rating</b>	V-2
<b>max. ambient temperature operation</b>	70 °C
<b>IP code</b>	IP20
<b>IP code when plugged</b>	IP40
<b>type of conductor solid</b>	yes
<b>type of conductor flexible</b>	yes
<b>type of conductor stranded</b>	yes
<b>stripping length</b>	7.0 mm
<b>wall thickness min.</b>	0.5 mm

<b>wall thickness max.</b>	1.2 mm
----------------------------	--------

---

## Approvals

---

<b>acc. to EN 61535</b>	<a href="#">Download PDF</a>
-------------------------	------------------------------

---

<b>acc. to UL</b>	<a href="#">Download PDF</a>
-------------------	------------------------------

---

## Accessories

---

<b>AC 164 VT 3/5 WS</b>	149755
-------------------------	--------

---