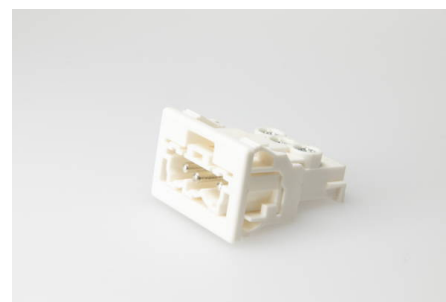




Connectors System AC 164 Panel Mounting

AC 164 EST/ 3 WS

plug, 3 pole, white, coding: 1 (mains), voltage rating: 250 V, current rating: 16 A, cross-section rating: 2.5 mm², wall thickness min.: 0.5 mm, wall thickness max.: 1.2 mm



Order Info

reference number (ref.no.)	148753
PU	200
EAN	4028012123964

Type

type	plug
number of poles	3 pole
clamping units per pole	1
colour	white
coding	1 (mains)
cross-section rating	2.5 mm ²
PE function	yes
protection against incorrect plugging	yes
latch	yes

Technical Data

voltage rating	250 V
current rating	16 A
contact material	brass
core cross-section min.	0.5 mm ²
core cross-section max.	2.5 mm ²
impulse voltage rating	4.0 kV
flammability rating	V-2
max. ambient temperature operation	70 °C
IP code	IP20
IP code when plugged	IP40
type of conductor solid	yes
type of conductor flexible	yes
type of conductor stranded	yes
stripping length	7.0 mm
wall thickness min.	0.5 mm

wall thickness max.	1.2 mm
----------------------------	--------

Approvals

acc. to EN 61535	Download PDF
-------------------------	------------------------------

acc. to UL	Download PDF
-------------------	------------------------------

Accessories

AC 164 VT 3/3 WS	149753
-------------------------	--------
