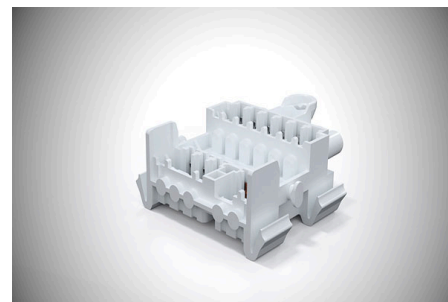




LEDtrack Row Lighting System  
LEDtrack Components

## LEDtrack ST/11 GEN2



### Order Info

reference number (ref. no.)	26903
PU	400
EAN	4028012179046

### Type

Type	plug
connection type	push-in
number of poles	11 pole
colour	natural
PE-function	yes
latch	yes

### Electrical Data

rated voltage	400 V
rated current	16 A
rated impulse voltage	6.0 kV

### Connection Data

cross-section rating	2.5 mm <sup>2</sup>
clamping range	1.5 - 2.5 mm <sup>2</sup>
type of conductor	solid
stripping length	15.0 mm
fixing	catch wing
clamping units per pole	1

### Ambient Conditions

T <sub>max</sub> component (operation)	105 °C
T <sub>min</sub> component (operation)	-25 °C
IP Code when plugged	IP20

### Materials

insulator material	PA
contact material	spring steel, bronze
flammability rating acc. to UL 94	V-2

## Approvals

acc. to EN 61984	yes
acc. to CE	yes
acc. to UKCA	yes