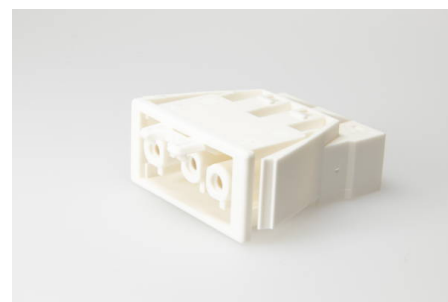




Building Installation Connector System
AC 166® G
Panel Mounting

AC 166 GEBU/ 3 WS VSE



Order Info

reference number (ref. no.)	17807
PU	200
EAN	4028012111565

Type

Type	panel mount socket with latch
connection type	push-in
number of poles	3 pole
coding	1 (mains) white
colour	white
protection against incorrect plugging	yes
PE-function	yes
latch	yes
maintenance-free	yes

Electrical Data

rated voltage	250 V
rated voltage (UL)	600 V
rated current	20 A
rated current (UL)	16 A
rated impulse voltage	4 kV

Connection Data

rated connecting capacity	0.5-2.5 mm ²
cross-sectional area (UL)	14-18 AWG
clamping range	0.5-2.5 mm ²
type of conductor	solid
stripping length	8.0-9.0 mm
fixing	catch wing
clamping units per pole	2
pole marking	L1 ⊕ N
wall thickness	0.5-1.2 mm

Ambient Conditions

T _{max} ambient air (at rated current)	70 °C
T _{max} component (operation)	110 °C
T _{min} component (operation)	-20 °C
IP Code acc. to EN 60529	IP20
IP Code when plugged	IP40

Materials

insulator material	PA
contact material	spring steel, brass
flammability rating acc. to UL 94	V-2
halogen-free	yes

Approvals

acc. to EN 61535
acc. to UL
acc. to CSA