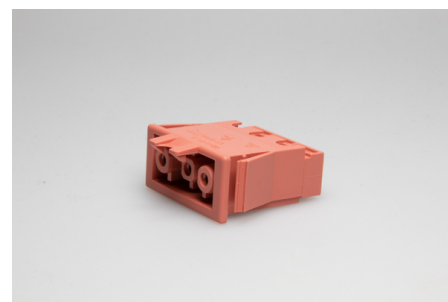




Building Installation Connector System
AC 166® G
Panel Mounting

AC 166 GEBPKV/ 3 HR



Order Info

reference number (ref. no.)	17803
PU	200
EAN	4028012155132

Type

Type	panel mount socket
Type1	panel mount socket
connection type	push-in
number of poles	3 pole
coding	3 (mains) light red
colour	light red
protection against incorrect plugging	yes
PE-function	yes
latch	yes
maintenance-free	yes

Electrical Data

rated voltage	250 V
rated current	20 A
rated impulse voltage	4 kV

Connection Data

rated connecting capacity	0.5-2.5 mm ²
clamping range	0.5-2.5 mm ²
type of conductor	solid
stripping length	8.0-9.0 mm
fixing	catch wing
clamping units per pole	2
pole marking	L1 ⊕ N
wall thickness	1.5-2.5 mm

Ambient Conditions

T _{max} ambient air (at rated current)	70 °C
T _{max} component (operation)	100 °C

IP Code acc. to EN 60529	IP20
IP Code when plugged	IP40

Materials

insulator material	PA
contact material	spring steel, brass
flammability rating acc. to UL 94	V-2
halogen-free	yes

Approvals

acc. to EN 61535