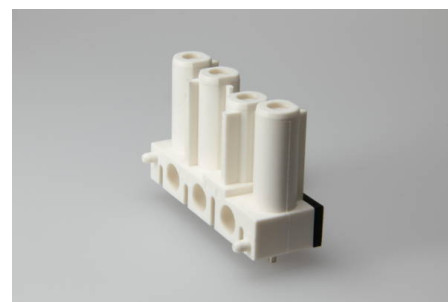




Building Installation Connector System  
AC 166® G  
Terminal Blocks with Solder Tags

## AC 166 GBULV/ 4 WS



### Order Info

reference number (ref. no.)	169354
PU	150
EAN	4028012107612

### Type

Type	socket vertical
connection type	solder
number of poles	4 pole
coding	1 (mains) white
colour	white
protection against incorrect plugging	yes
PE-function	yes

### Electrical Data

rated voltage	250/400 V
rated voltage (UL)	600 V
rated current	20 A
rated current (UL)	16 A
rated impulse voltage	4 kV

### Connection Data

mounting hole diameter	1.4 mm
solder pin length	3.3 mm
pole marking	L1 ⊕ N L2

### Ambient Conditions

T <sub>max</sub> ambient air (at rated current)	70 °C
T <sub>max</sub> component (operation)	110 °C
T <sub>min</sub> component (operation)	-20 °C
IP Code acc. to EN 60529	IP20
IP Code when plugged	IP40

### Materials

insulator material	PA
--------------------	----

contact material	brass
flammability rating acc. to UL 94	V-2

## Approvals

acc. to EN 61535
acc. to UL

## Accessories

AC 166 VSL SW	169564
AC 166 VSL WS	169554