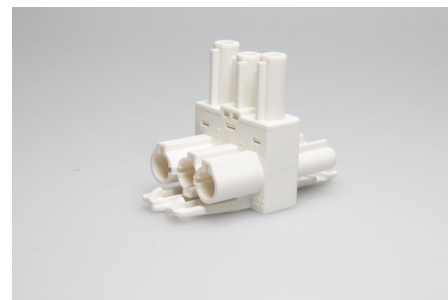




Building Installation Connector System  
AC 166® G  
Distributors

## AC 166 GVTA 3/3 WS



### Order Info

reference number (ref. no.)	167253
PU	100
EAN	4028012173334

### Type

Type	T-shaped 1 input / 2 outputs, stackable
Type1	T-shaped
Type2	1 input / 2 outputs, stackable
number of poles	3 pole
coding	1 (mains) white
colour	white
protection against incorrect plugging	yes
PE-function	yes
latch	yes
maintenance-free	yes

### Electrical Data

rated voltage	250 V
rated voltage (UL)	600 V
rated current	20 A
rated current (UL)	16 A
rated impulse voltage	4 kV

### Connection Data

pole marking	L ⊕ N
--------------	-------

### Ambient Conditions

T <sub>max</sub> ambient air (at rated current)	70 °C
T <sub>max</sub> component (operation)	110 °C
T <sub>min</sub> component (operation)	-20 °C
IP Code acc. to EN 60529	IP20
IP Code when plugged	IP40

## Materials

insulator material	PA
contact material	brass
flammability rating acc. to UL 94	V-2
halogen-free	yes

## Approvals

acc. to EN 61535
acc. to UL

## Accessories

AC 166 BC/ 3 SW	169783
AC 166 BC/ 3 WS	169773