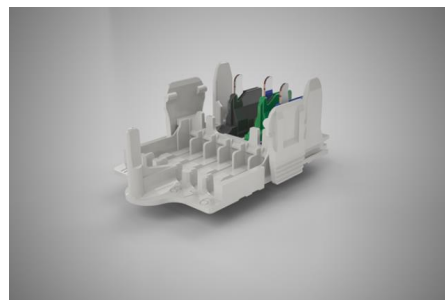




LEDtrack Row Lighting System  
LEDtrack Components

## LEDtrack TAP/11-3 FIX



### Order Info

reference number (ref. no.)	158103
PU	150
EAN	4028012124336

### Type

Type	tap to the luminaire fix
core cross-section	0.5 mm <sup>2</sup>
connection type	push-in
number of poles	3 pole
colour	beige
PE-function	yes
latch	yes

### Electrical Data

rated voltage	400 V
rated current	2 A
rated impulse voltage	6.0 kV

### Connection Data

cross-section rating	0.5 mm <sup>2</sup>
type of conductor	solid
stripping length	8.0 mm
fixing	short catch pin
clamping units per pole	1
wall thickness	0.5 - 1.0 mm

### Ambient Conditions

T <sub>max</sub> component (operation)	80 °C
T <sub>min</sub> component (operation)	-25 °C
IP Code when plugged	IP20

### Materials

insulator material	PA
contact material	spring steel, copper
flammability rating acc. to UL 94	V-2

## Approvals

acc. to EN 61984	yes
acc. to CE	yes
acc. to UKCA	yes