

# AC 164 STF/ 3    AC 164 BUF/ 3

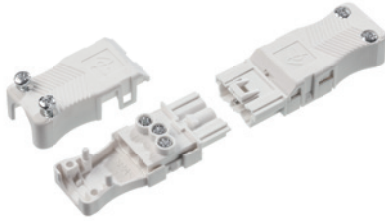
## Montageanleitung

*Assembling instruction*



**AC 164 STF/ 3**  
AC 164 STF/ 3

**AC 164 BUF/ 3**  
AC 164 BUF/ 3



### POSITIONIERUNG DER ZUGENTLASTUNGSBRÜCKEN

*Positioning of the Strain Relief Bridges*

**0,5 - 1,5**  
mm<sup>2</sup>

**16 A**  
250/400 V

**0,5 Nm**

**3 POLE    Ø 5,4 - 9,0 mm**

<b>POS. 02</b>	X	X	Ø 5,4 - 5,7	Ø 6,6 - 6,9	≥ Ø 7,8
<b>POS. 01</b>	X	X	Ø 5,8 - 6,5	Ø 7,0 - 7,7	

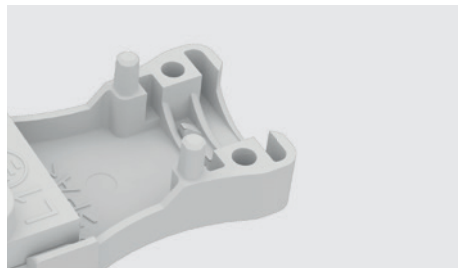
### KABELDURCHMESSER ERMITTELN

*Determining the cable diameter*



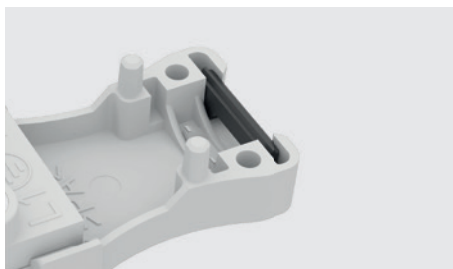
### KEINE ZEL-BRÜCKE

*No ZEL insert*



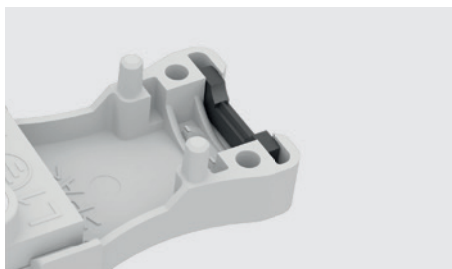
## ZEL-BRÜCKE AN POS. 1

ZEL insert on pos. 1



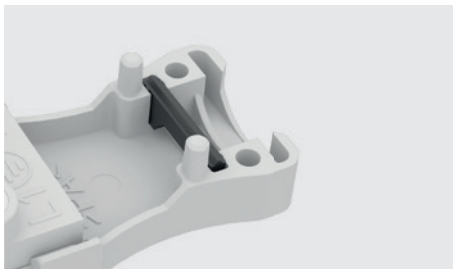
## ZEL-BRÜCKE GEDREHT AN POS. 1

ZEL insert turned on pos. 1



## ZEL-BRÜCKE AN POS. 2

ZEL insert on pos. 2



## ZEL-BRÜCKE GEDREHT AN POS. 2

ZEL insert turned on pos. 2

