

# Screw Terminal Blocks



Terminal strips, the All-Rounders for  
the connection of electrical appliances and lighting

Screw terminals are important connecting elements in electrical engineering that are used for the detachable connection of electrical conductors. They enable a secure and permanent connection, which is necessary for the transmission of electrical currents.

## **What are screw terminal blocks? How do screw terminal blocks work? Which conductors can they be used for?**

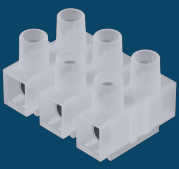
Our screw terminals, also known as luster terminals, are typically made of brass as the current-conducting material, which is surrounded by an insulating polyamide housing. During use, the stripped conductor is inserted into the terminal and fixed in place with a clamping screw. This type of connection is suitable for both rigid (solid and stranded) and flexible (fine-stranded) conductors. For fine-stranded conductors, Adels-Contact has invented the so-called wire protection spring (DS), which sits in the brass socket and protects the strands from damage by the screw.

## **Where are screw terminal blocks used? What are the particular advantages of screw terminal blocks? What do I need to bear in mind when installing screw terminal blocks?**

Adels-Contact screw terminals, approved by the international approval bodies, are used to connect lights and electrical appliances. Screw terminals are easy to install and remove, but require tools (screwdrivers) for assembly and disassembly.

A correctly tightened screw terminal ensures a secure connection that eliminates the risk of overheating and short circuits. However, improper assembly can lead to problems such as the burning of wires. Screw terminals can be easily removed and reused, making them ideal for installations.

Overall, screw terminals are an indispensable element in electrical installations, ensuring both the safety and functionality of electrical systems.



# Screw Terminal Blocks



Terminal strips, the All-Rounders for  
the connection of electrical appliances and lighting

## How sustainable are screw terminal blocks?

Sustainability has always been at the core of our thoughts and actions and will remain so. We see sustainability not just as an isolated goal, but as a fundamental principle that is anchored in all aspects of our actions.

All Adels-Contact products, as well as the machinery and equipment required for production, are designed to be extremely durable. The two most important raw materials for manufacturing our screw terminal blocks, brass and polyamide, are almost 100% recycled.

## Where can you find the right screw terminal for your application? Which screw terminal version is available for which application?

You can make an initial selection of the terminal you are looking for under the screw terminal blocks heading in our product finder. Which version is required? In addition to terminal blocks, this can also include accessories such as covers, strain reliefs or marking strips.

What number of poles is required? 1 to 12 poles are available.

Are there any special requirements for the material of the insulator? In addition to the standard polyamide, we offer special versions made of high-temperature-resistant materials or for the glow-wire test required by the electrical appliance standard EN 60320.

What nominal cross-section is required? 2.5, 6.0, 10.0 or 16.0 mm<sup>2</sup>? And how is it mounted in the device or luminaire? In other words, what pitch is required and how is the terminal fixed (screw or catch pin on the terminal)?

Other variants of screw terminal blocks to be selected are those with wire protection, additional centre-push-through protection and a terminal design of protection class II (in accordance with EN 61140).